



## datair1500

### HAND HELD MIL-STD-1553B DATABUS ANALYSER

The DATAIR-1500 real time Databus Analyser is an easy to use first line diagnostic tool. It allows the user to connect to an MIL-STD-1553B databus and instantly view active 1553 bus traffic. Bus searches for Active RT's, SA's, Mode Codes and the display of associated data words are easily achieved within a few key presses. The DATAIR-1500 opens a window onto the live databus and provides quick solutions to the most demanding databus problems and without the necessity of cumbersome PC's or Notebooks trailing behind you!

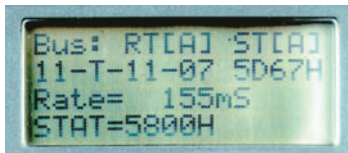
The active RT's, SA's, Mode Codes and Data Words contained



in a selected 1553 message can be displayed in a scrollable fashion on the four line LCD. Control of the displayed messages is via the three push buttons. The buttons are used to position

the flashing cursor over an item of interest and pressing the centre button makes the selection. This instrument is extremely easy to use and understand!

The Command and Status screen provides the basic information about selected message.

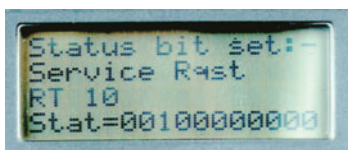


This includes the hexadecimal representation of the Command and Status words and a breakdown of the sub-fields within the Command word giving RT

number, T/R, sub-address number and the word count. The repetition rate for the message is displayed in milliseconds. It also provides an indication of which of the two buses are being used (*Primary or Secondary*).

Data Words associated with the currently selected message are displayed as a list in hexadecimal or User Defined Engineering Units format.

Message protocol errors for short Word and long Word messages



are indicated. Status Word bit errors are identified in English according to the 1553B specification and can also be displayed in binary.

The Engineering Units Word Definition Software allows a user to define and download Engineering Units word definitions to the DATAIR-1500. This allows data on the DATAIR-1500 to be displayed in the required customised format. Data is always available in hexadecimal format.

#### See over for software...

The DATAIR-1500 is powered from 4xLR6 (MN1500, AA) Alkaline cells or from an external 6-volt D.C. supply.



#### datair1500 product specification

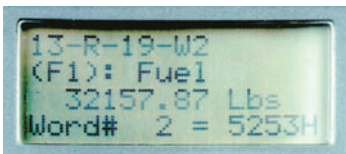
- ✦ Datair1500/sr - single bus analyser
- ✦ Datair1500/dr - dual redundant bus analyser
- ✦ Triax (BJ-77) connectors
- ✦ Bus Search (RT, SA, MC)
- ✦ Real time data monitor
- ✦ Primary and Secondary Bus identification (*Datair1500/dr*)
- ✦ Display of Word Count errors
- ✦ Display of Status bit errors
- ✦ Very simple to use - Only three buttons
- ✦ 4 line by 16 character LCD read-out
- ✦ Microsoft Windows Engineering Units Word Definition Software with RS232 download
- ✦ Battery powered
- ✦ Operating temperature 0 to 50°C.
- ✦ Humidity: 0 to 90% R.H. non-condensing



# datair1500

## HAND HELD MIL-STD-1553B DATABUS ANALYSER

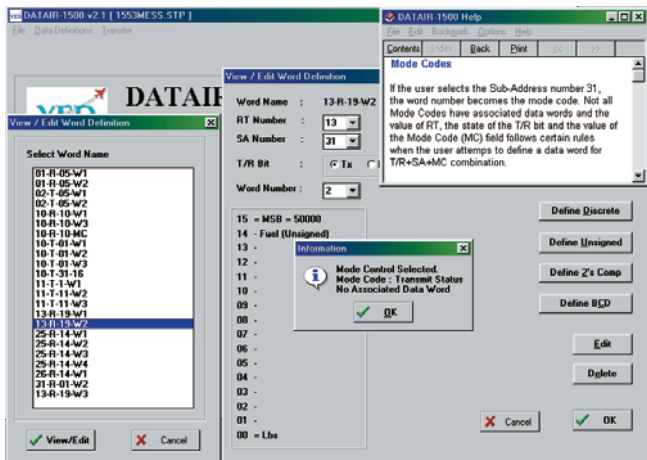
### Engineering units Word Definition Software



The DATAIR-1500 unit can display engineering formatted data according to internally held data conversions. These conversions are defined

using the Engineering Units Word Definition Software and downloaded via an RS232 link to the DATAIR-1500 unit.

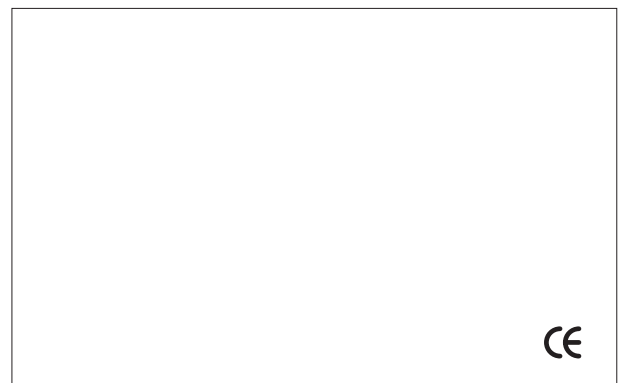
A name for each RT, a name for each Word defined within the message, and definitions for up to three fields within each Word can be edited using the software. Each Field entry comprises of a Start position and Length, an MSB Value, the Conversion Format (*2's compliment, BCD, etc.*) and a Name for the Units. Up to 100 word definitions can be defined, stored to and retrieved from the hard disk.



The software operates on any PC running Microsoft Windows™ 95/98/NT/W2K/XP.

### datair1500 technical specification

<b>bus network frontend</b>	Single or Dual Redundant MIL-STD-1553B Transformer coupled. One 'standard' Manchester Decoder and Parity checker	
<b>input levels</b>	5-22V p-p	
<b>connectors</b>	BJ-77 Triax	
<b>input impedance</b>	3 kΩ minimum (balance)	
<b>product dimensions</b> (mm)	195L x 100W x 42D	
<b>weight</b>	600 grams	
<b>user interface</b>	4 line x 16 character LCD 3 push button menu selection	
<b>power requirements</b>	External DC Batteries Battery Lifetime	3 to 7 VDC @ 100mA 4x MN1500 or AA size Up to 6 hours
<b>Operating Environment</b>	Temperature Humidity Range	+0°C to 50°C 0% to 95% non-condensing



The information contained in this brochure is subject to change without notice. YED shall not be liable for errors or omissions contained herein.